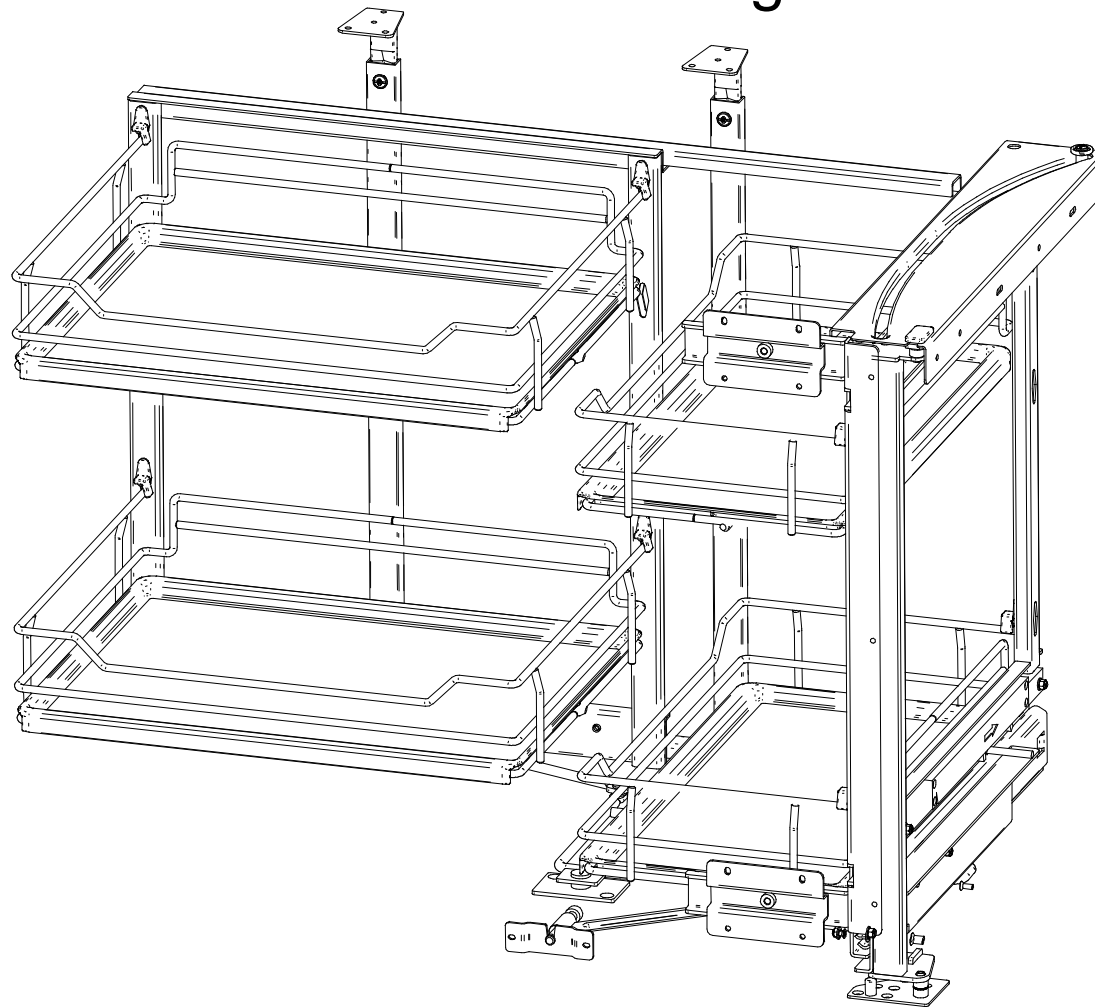


d.o.a.: 2013-04-22

# Maxima EVO

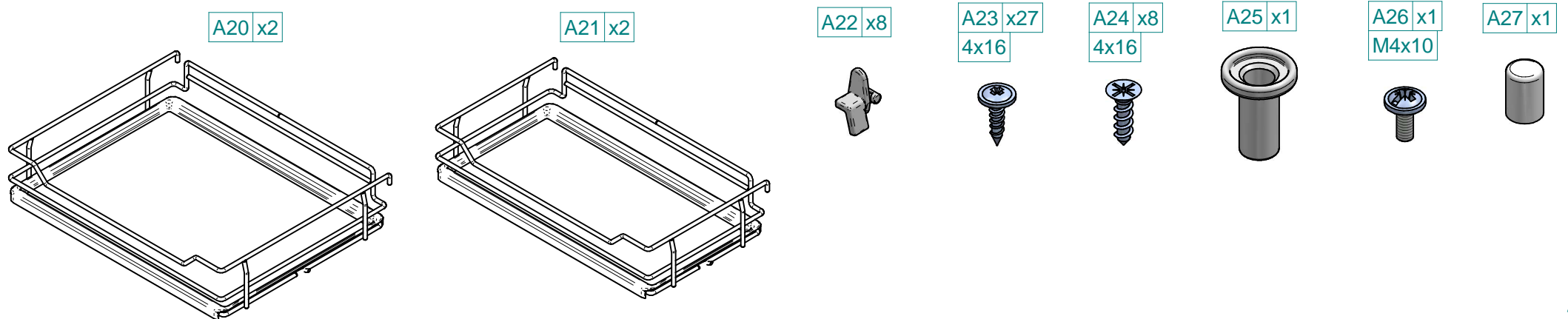
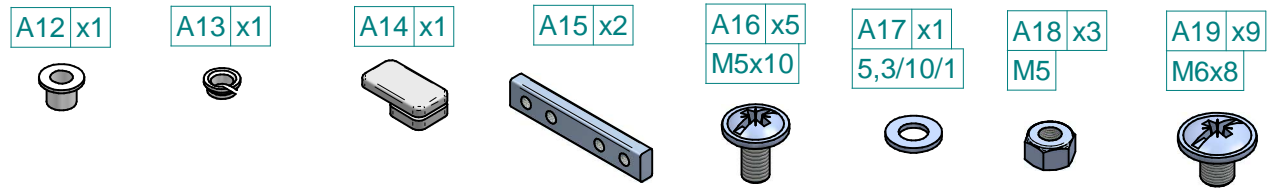
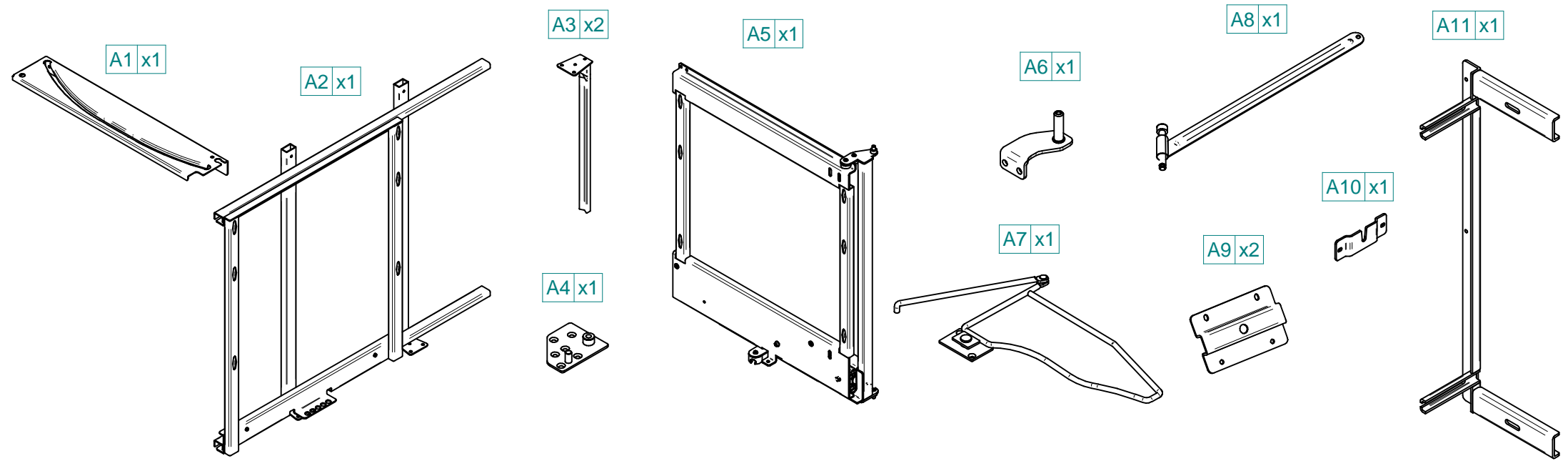
## Corner Front Prawy

## Corner Front Right



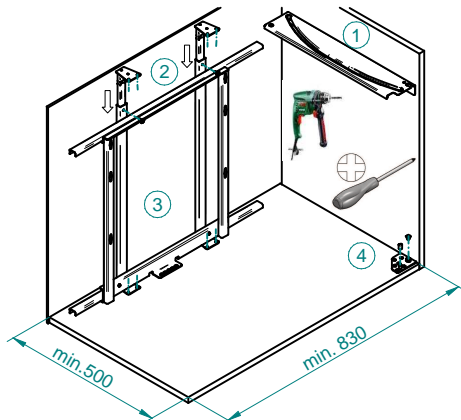
Rejs Spółka z o. o.  
PL 87-500 Rypin  
ul. Mławska 61  
tel. +48 54 280 5651  
fax +48 54 280 6192  
[www.rejs.eu](http://www.rejs.eu)

  
**REJS**  
wyposażenie mebli



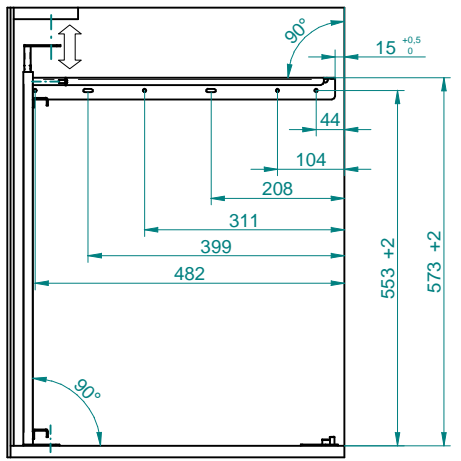
1

- A1 x1
- A2 x1
- A3 x2
- A4 x1
- A12 x1
- A16 x2
- A23 x14
- A24 x6
- A27 x1

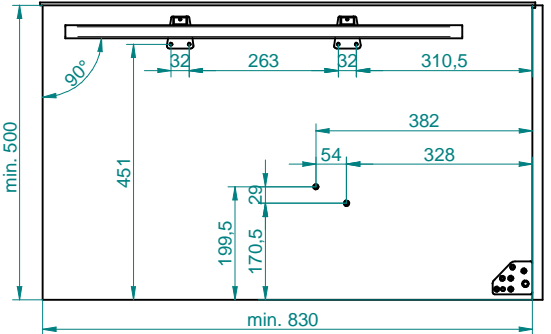


1,2

A16  
A23

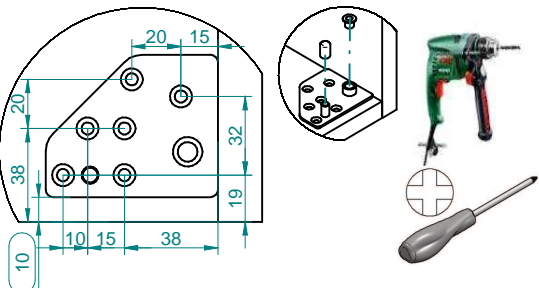


3



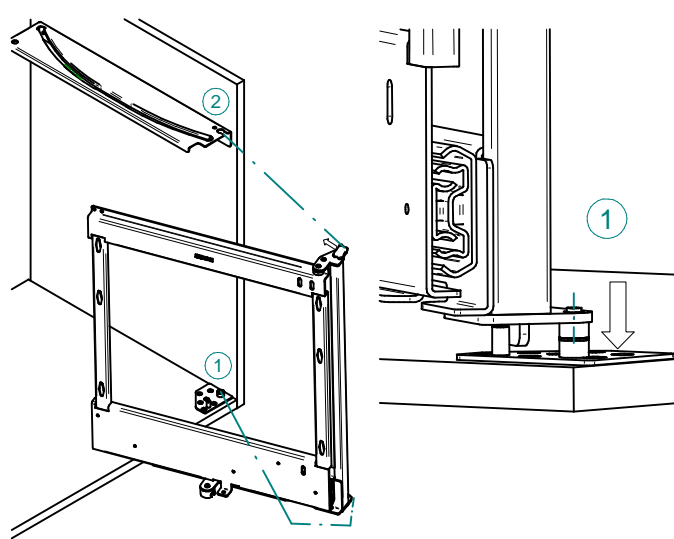
4

A12  
A24  
A27

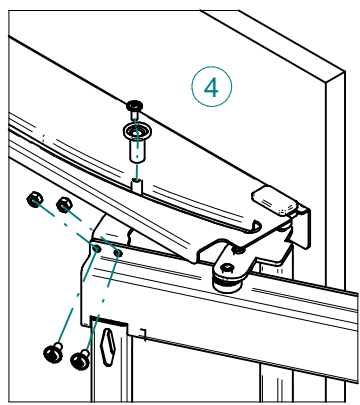
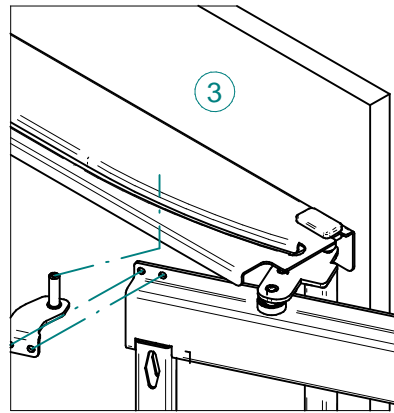
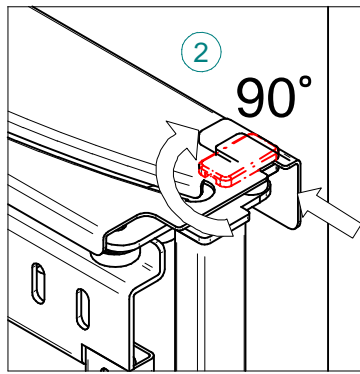
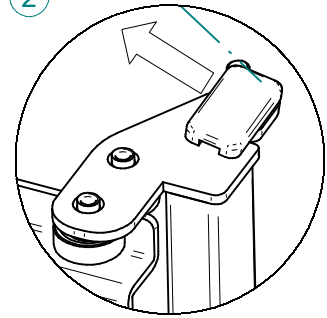


2

- A5 x1
- A6 x1
- A14 x1
- A16 x2
- A18 x2
- A25 x1
- A26 x1

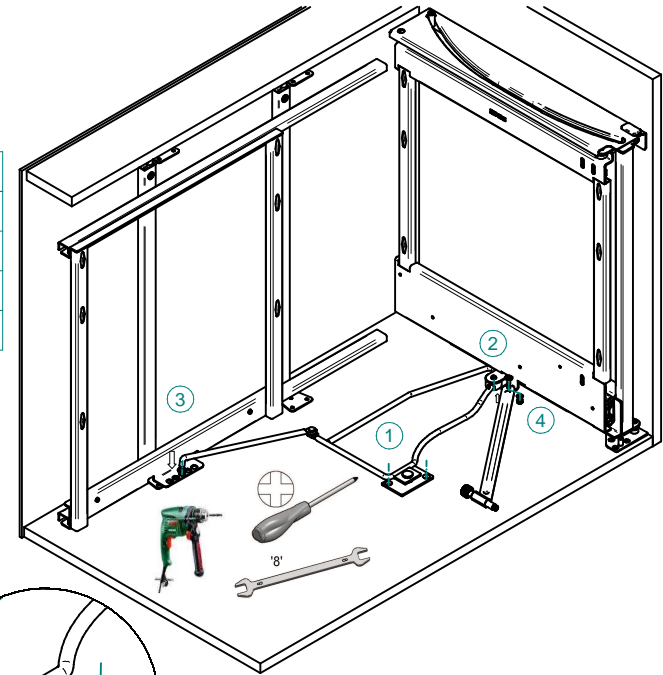


2



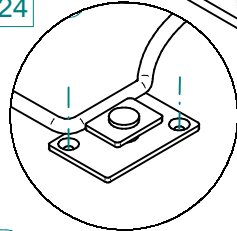
3

- A7 x1
- A8 x1
- A13 x1
- A16 x1
- A17 x1
- A18 x1
- A24 x2

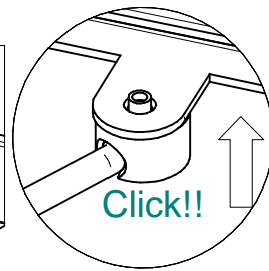
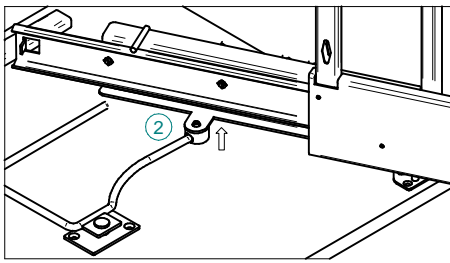


1

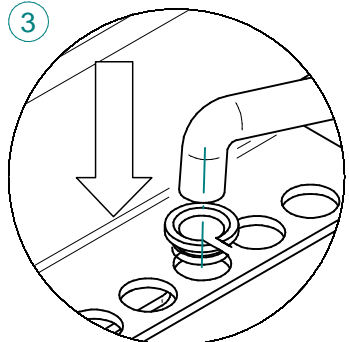
A24



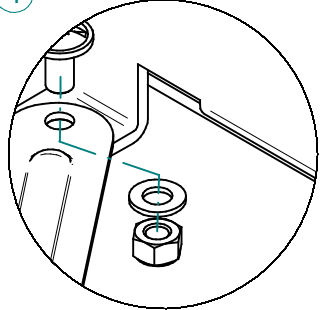
2



3

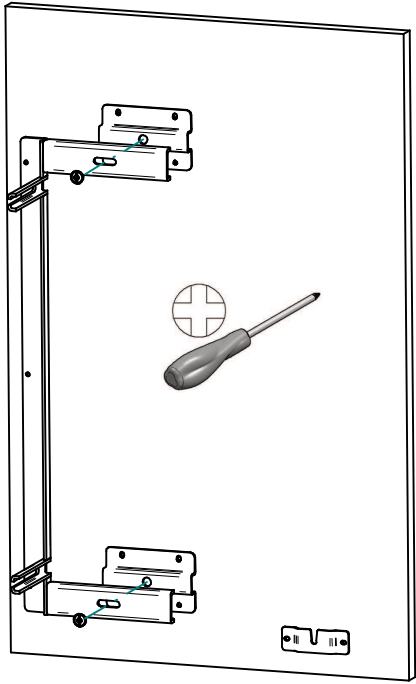
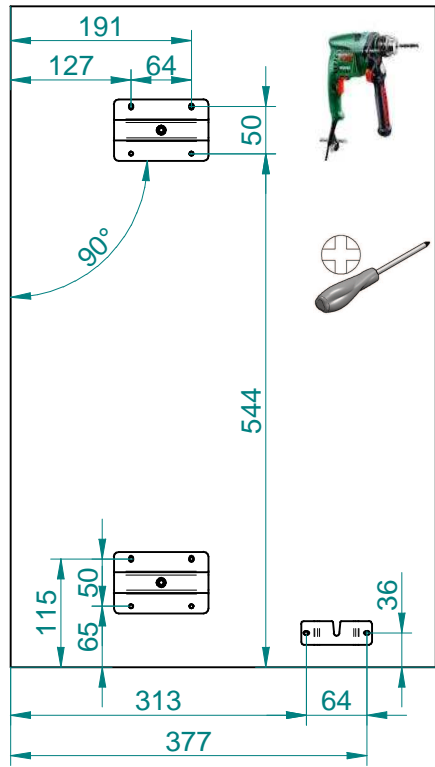


4



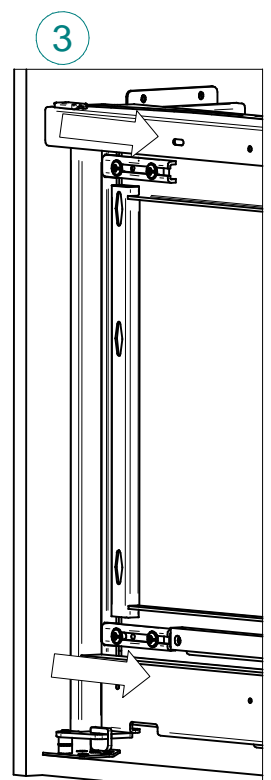
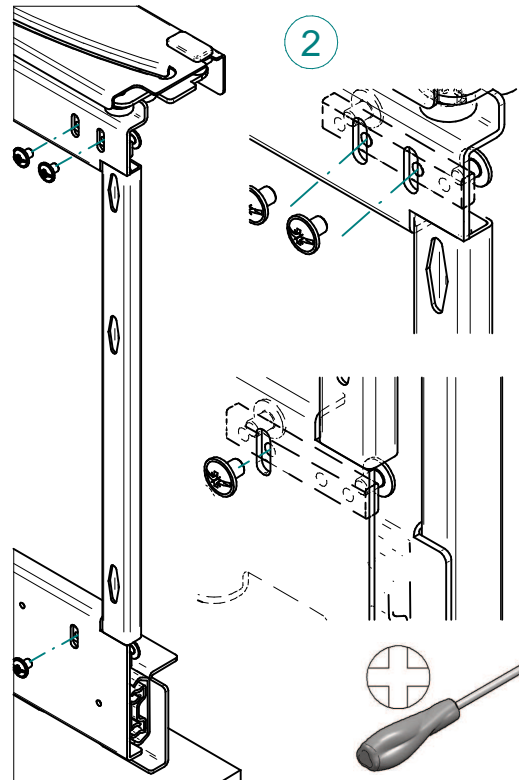
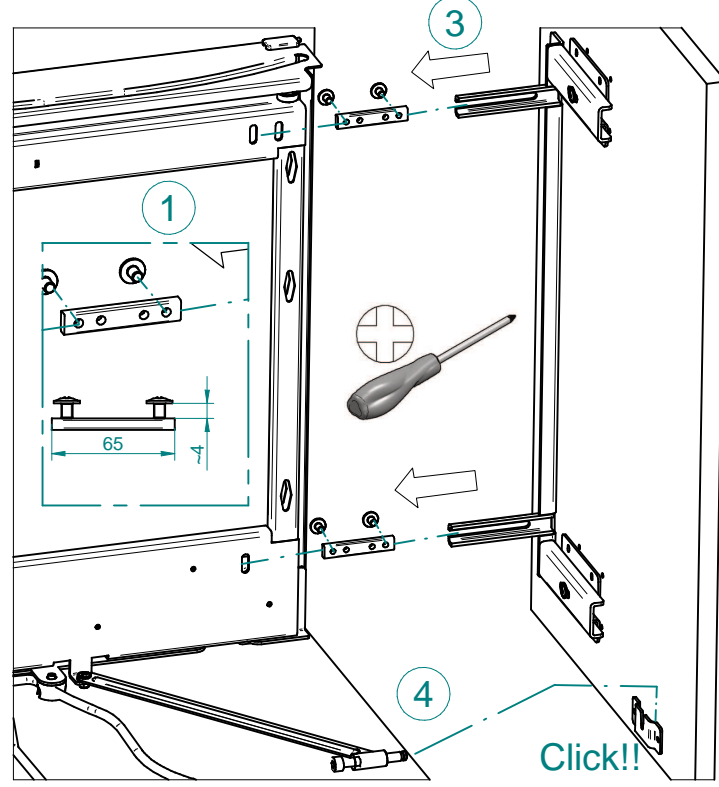
4

- A9 x2
- A10 x1
- A11 x1
- A19 x2
- A23 x10

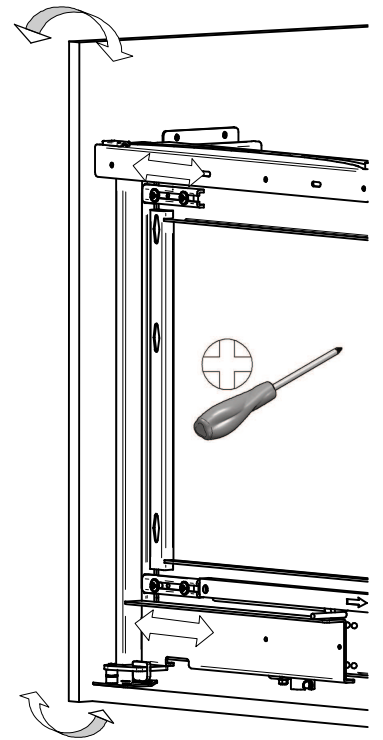
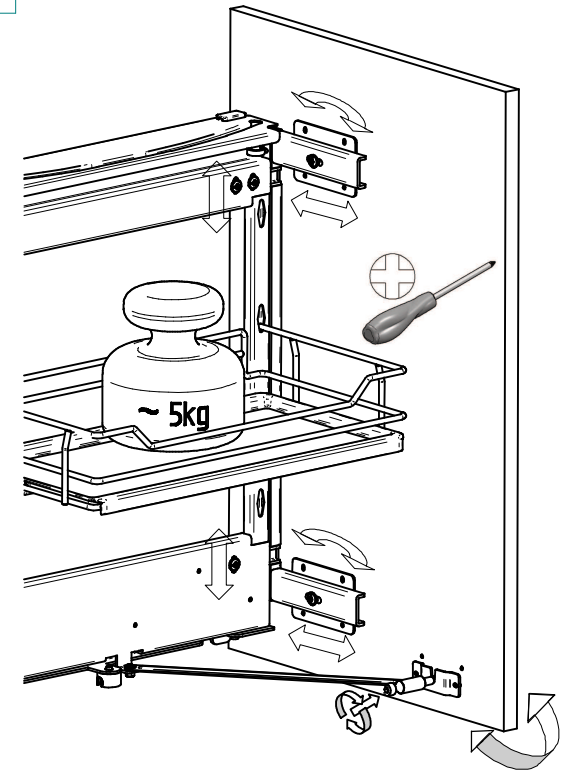


5

- A15 x2
- A19 x7

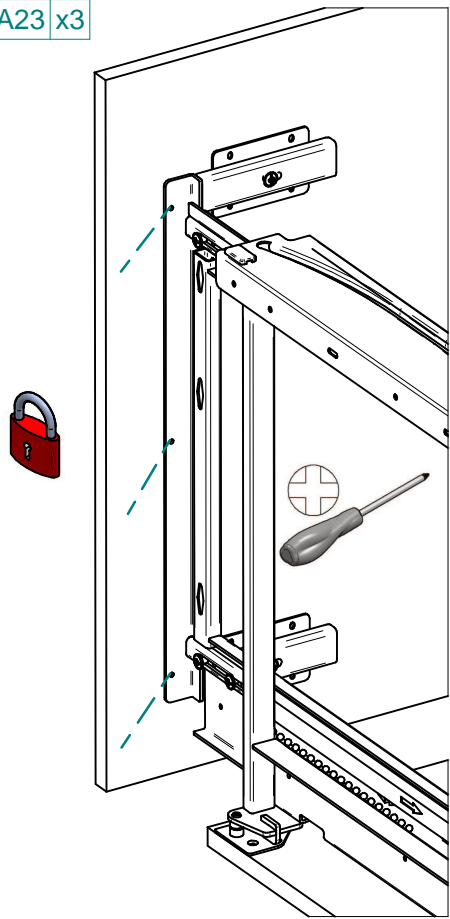


6



7

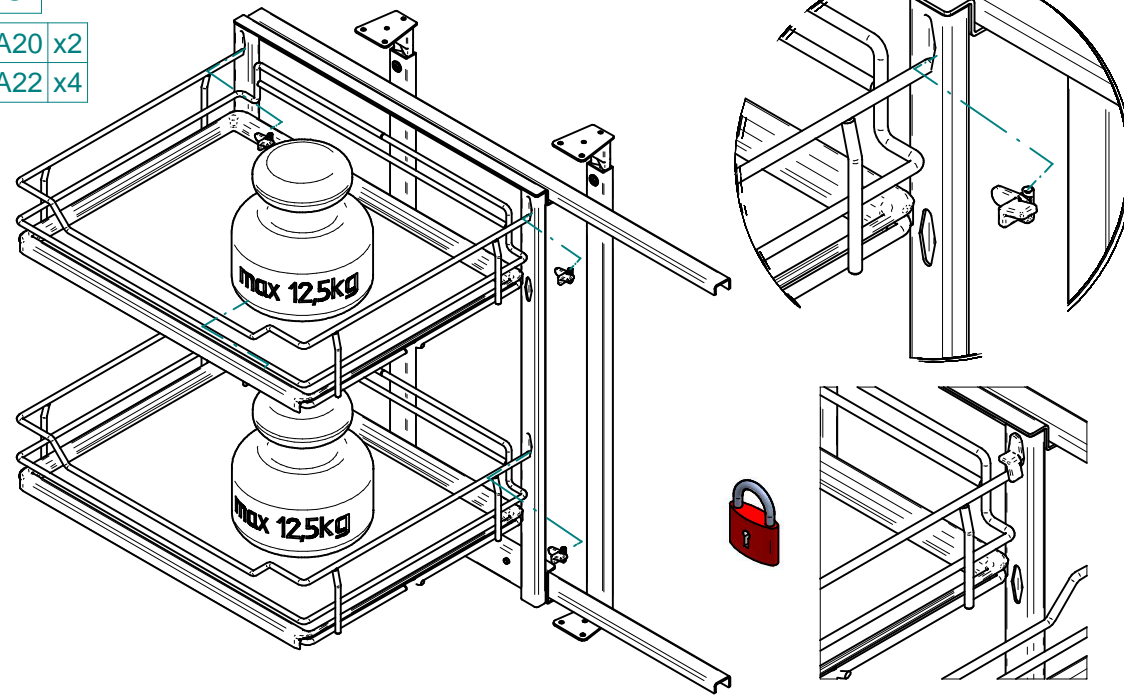
A23 x3



8

A20 x2

A22 x4



9

A21 x2

A22 x4

